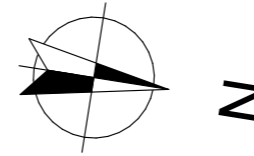
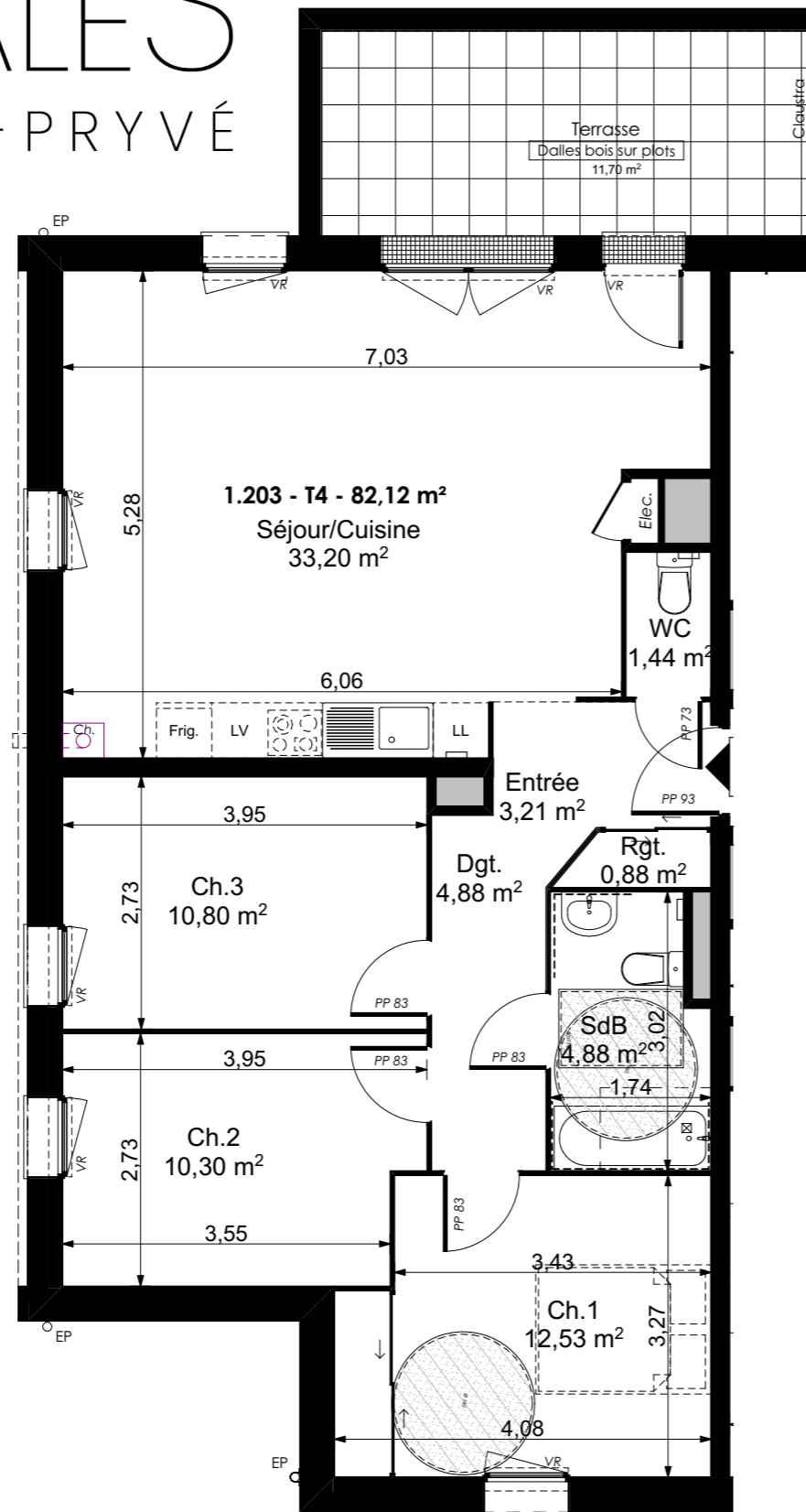


LES BORÉALES

DE SAINT-PRYVÉ



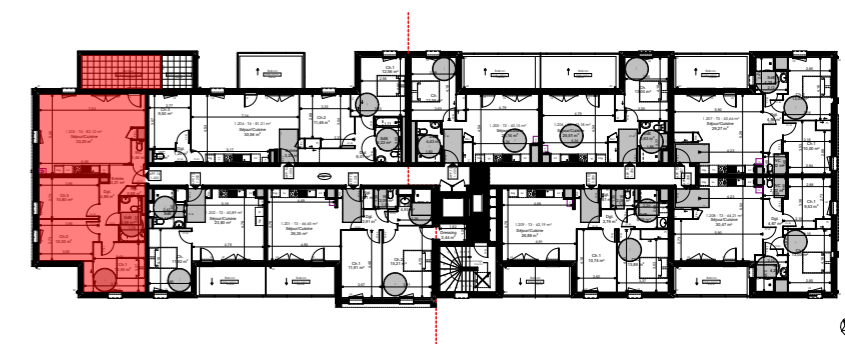
Valloire Habitat

Groupe ActionLogement

28 bis rue du Gros Raisin
45750 SAINT-PRYVE-SAINT-MESMIN

Les BoRéales de Saint-Pryvé

TYPE T4 - LOGEMENT 1-203 R+2		
Séjour/Cuisine		33,20 m ²
Entrée		3,21 m ²
Dgt		4,88 m ²
WC		1,44 m ²
Rgt		0,88 m ²
SdB		4,88 m ²
Ch. 1		12,53 m ²
Ch. 2		10,30 m ²
Ch. 3		10,80 m ²
Total surfaces habitables		82,12 m ²
Annexes		Surf. Utile
Balcon		11,70 m ²
Total surfaces Annexes		11,70 m ²
	TOTAL SURFACES	93,82 m ²



15/11/2022

Indice C

Ech : 1:75

